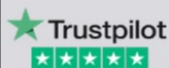


THE VOICE

October 2024



A COMMUNITY MAGAZINE FOR BOROUGH GREEN
PRODUCED BY THE CHURCH OF THE GOOD SHEPHERD,
DELIVERED FREE TO ALL HOMES AND BUSINESSES IN THE VILLAGE.
WITH THANKS TO ALL COMMUNITY SUPPORT (see page 9).



Central Heating & Boiler Engineers

Gas * Oil * LPG

"you may not need a local & reliable boiler engineer today, just remember our name for the day you do"



Service

Installation

Repair



01732 885882

www.samsian.co.uk

G R SERVICING LTD

Now at Unit 16
Orchard Place Business Centre
Seven Mile Lane
Wrotham Heath



Servicing and repairing your vehicles.

MOTs can also be arranged.

PLEASE CALL
01732 882725 as before.

BOROUGH GREEN OPTICIANS

EST 1972

OPTOMETRISTS AND
CONTACT LENS CONSULTANTS

Monday, Tuesday, Thursday, Friday
9.00 - 5.30

Wednesday Closed

Saturday
9.00 - 1.00

- Full eye examination
- Cataract referrals
- Glaucoma check
- Free trial on most types of contact lenses



25, High Street
Borough Green
Kent

01732 884558

Email bgopticians@outlook.com

Editorial from the Church of the Good Shepherd

October 2024

Harvest time again....

Another October, another harvest. Climate change may be making the seasons a little bit more unpredictable but somethings never change. And as it's harvest it means another mention about the Church of the Good Shepherd Food Bank.

Firstly, a very big thank you to all those who contribute to the food bank. Though the number of families that we support varies as they move in and out of need, we have recently been providing for over 30 families. And, because of the donations made by people in Borough Green, Ightham, Wrotham, Platt, Crouch and elsewhere, we have been able to make sure those families have enough food and basic provisions each week.

However, despite the great generosity of those who give, it is not enough. In a six-month period we also had to spend over £5,000 to buy additional food to what had been donated. Therefore I'm again asking for everyone to reflect on whether they can give anything towards the food bank. It is an uncomfortable truth that in one of the richest countries in the world there are many people who cannot afford to put food on the table, even in a relatively affluent part of that country. There are a wide variety of reasons why a family might be struggling. Sometimes it's only for a few weeks, while waiting for the benefit payments to start, but it can also be longer, for example due to long term health problems. Whatever the cause, the food bank aims to help.

If you can make a donation then below is a list of the groceries we give out most. The church is open every day for items to be dropped off. We have several people who organise regular collections in the neighbourhood and bring a load along when they can. If you have a large amount to donate, then it is possible to arrange for us to collect it. If you want to give, but buying groceries and dropping them off is not convenient, we also take cash donations. If you would like information on how to give, then please get in touch.

As one of the big supermarkets says in its adverts, "Every little helps". If all you can give is a little, then that little is a big help.

Thank you again to those who donate and also to the amazing volunteers who bag up the groceries, stack shelves, organise shopping, do deliveries and so much more.

May your harvest be fruitful enough for you to have something to share.

God bless

Revd. Chris

Food bank "shopping list"

Standard

Biscuits, Pasta Sauce, Pasta, Rice/Spaghetti, Noodles, Breakfast Bars, Coffee, Tea, Hot Chocolate, Ovaltine, Puddings/Tinned fruit, Cereals, Kidney beans, Chick Peas, Lentils etc, Semi-skimmed Long Life Milk/Almond Milk, Soup, Tinned meat/meat pies etc, Tuna & other tinned fish, Baked Beans, Spaghetti Hoops/Mac Cheese/similar, Tinned Tomatoes, Sweetcorn, Other tinned Veg/Potatoes, Cartons of juice/bottles of squash, Crisps.

Extras

Sweets, Chocolate etc, Jam/Peanut butter etc, Cleaning products, Shampoo, Soap, Ketchup/Sauces, Nappies, Shopping Bags.

FROM THE PARISH REGISTERS

BAPTISMS
Sonny James
Jasper Jewell

WEDDING
Bethan Sweeting & Alexander Cochrane-Dyet



Thanks

Delivering the Voice. Thanks to those who responded to the request for volunteers in last month's magazine - the immediate need has been met. We continue to be grateful to all those who deliver the Voice around the village.



Monday Minis Toddler Time

Play and socialising for pre-school children and their grown ups.
Monday 7 and 21 October 10 to 12 noon in COGS annexe. No charge, just a donation for tea and coffee please.

Games, Tea & Chat

On alternative **Mondays** (for dates see diary section) at 2 - 4pm in the annexe to the Church of the Good Shepherd. Come and enjoy board games, tea and a chat. Plenty of room for new folk so, if you are wondering whether it's for you, do get in touch and ask for more information or just turn up at 2.00.

Contact Elaine Almond on 886440 or etalmond@aol.com



Cinema at COGS

Wednesday 16 October 2pm in the Church of the Good Shepherd. Please check the Church's noticeboard for this month's presentation. All are welcome so come for an afternoon of free entertainment. Refreshments available during the interval.



The Church of the Good Shepherd

COGS website www.cogsonline.co.uk

Facebook - [COGSBG](https://www.facebook.com/COGSBG)

Email - vicar.cogs@gmail.com

01732 882447



AUTUMN CRAFT FAIR

Saturday 19th October
11am-2pm
Church of the Good Shepherd
Borough Green

- Cards
- Fidget toys
- Knitwear
- Ceramics
- Linoprints
- Cake stall
- & more

Refreshments
and
Try a craft tables

Sellers Table £15
Half table £7.50

To book contact
Carole 07542442140
carole@simpson6.co.uk

All Souls Service.

In memory of those we love but see no longer
Sunday, 3rd November, at 4pm
Church of the Good Shepherd



We will be holding a service of commemoration for those who have died.

This service will give some space to hold those who have died before God and in our hearts.

If you wish for someone to be remembered by name as part of the service then please forward their name(s) to me, either by phone or preferably email. Chris Turner (01732) 882447 vicar.cogs@gmail.com

Before the service, from 3:30pm, there will be an informal tea, giving a chance to gather, chat and share some memories. All are welcome to attend.

J & F
ACCOUNTANCY LTD

Chartered Accountants
Self Assessment Tax Returns
Self-Employed Accounts
Limited Company Accounts
Payroll & CIS

Tel: 01732 885444

1 Station Court, Station Approach
Borough Green, Kent TN15 8AD
Email: info@jandfaccountancy.co.uk
Web: www.jandfaccountancy.co.uk



**VEHICLE SERVICING
AND REPAIRS**

London House Works,
Station Road,
Borough Green

www.gsmechengineers.co.uk

email:
info@gsmechengineers.co.uk

Tel: 01732 885314

John Ballantyne
Handyman

All DIY work for reasonable rates

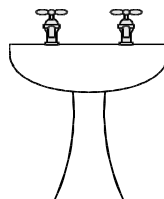
Painting and Decorating,
Kitchen Fitting,
Decking, Fencing,
Sheds and all Carpentry work,
Flat pack assembly,
Jet Washing.

General property maintenance
No job too small

Mobile: 07890 034846



Karl Burrluck
Plumbing and Heating



01732 886984
07886 783 170

52 Western Road
Borough Green,
Sevenoaks
TN15 8AQ

Notes from Borough Green Parish Council



ESTABLISHED
APRIL 1934

The Council met at 7.30pm Monday 9th September 2024
at Potters Mede. Matters discussed and reports received included:

- **The Public Toilets** are now fully open again and our apologies for the inconvenience. With the roof cleaned, new signs up, new "ladies" door at the front and the upgrades to the lighting we think it is much more welcoming; our thanks to everyone who worked so hard to achieve this result.
- **The Black Horse PH** fish bar and outside seating area has generated a huge number of complaints. We understand planning permission has had to be applied for and, because of the contentious nature of the applications, they will go before Planning Committee which will give the public the opportunity to have their say.
- **Potters Mede Pond** is not actually on our property but is an integral part of the whole drainage system. The developer at Potters Mede Bungalow has worked closely with the Parish Council to ensure the refurbished pond will fulfil its drainage functions, will preserve existing biodiversity and will be planted so it will become an attractive feature rather than a patch of scrubland. A new security fence is being installed to ensure children cannot access the now open water. (Ironically, after years of flooding and waterlogging problems at Potters Mede, we haven't had enough rain recently to fill the pond.)
- **Cllr Palmer (TMBC)** reported on the Government plans to reintroduce bus routes to serve rural communities but noted there were no pledges to replace the lost Government funding for these buses. A reminder to residents that we are part of a Parish Alliance that funds shopper buses to West Malling, Larkfield and Maidstone on Mondays, Thursdays and Fridays. Timetables on the website and noticeboard. She reported that the previous Local Plan housing targets of 820 houses per annum had now been lifted to 1056pa but that cities like London had had their targets substantially reduced.
- **Cllr Rayner (KCC)** again discussed the problems that Local Plan housing targets imposed by the new Government will cause on our failing infrastructure, in particular sewage in our area.
- **Basted House Drive** parking area recently had a tree branch fall. No harm was done but it has triggered a tree survey and the Parish Council is working hard to remove excess ivy that grew in the years before it came under our control.
- **External Auditor Mazards** has again given us a completely green Annual Governance and Accountability Report (AGAR) which is gold standard and rarely achieved. Our Clerk Bernie has now achieved this for three years in succession. Our thanks to Bernie for his hard work and expertise. (He is also pretty good at finding and obtaining grant funding for our many projects.)
- **Darkhill Rd HGV parking** has encouraged multiple complaints on safety grounds and, with Cllr Rayner's help, this will be an agenda item on the Joint Transportation Board seeking yellow lines to control parking. We are also talking to H+H Celcon to see if they can help with the problem, and also discussing HGV routes and speed through the village. If you can get pictures of Keedwell HGVs using the A227 or Western Rd, send pictures or registration numbers to the emails at the end of notes.

The Birkbeck Chiropody & Podiatry Practice

Health Professions Council (HPC) Registered Podiatrists

Open Monday to Saturday
Day and Evening Appointments
Easy Car Parking

Telephone: 01732 883271



Woodlands, 172 Maidstone Road, Borough Green, Sevenoaks TN15 8JD
T | 01732 883271 W | birkbeckpodiatry.com

Sevenoaks Tree Care

Robert Hill
07598870177

sevenoakstreecare@gmail.com

All aspects of tree surgery covering Sevenoaks and surrounding areas.

- Tree Removal.
- Tree Reduction.
- Veteran Tree Care.
- Dead Wooding.
- Site Clearance.
- Hedge Trimming.
- Shrub Pruning.
- Fruit Tree Pruning.
- Stump Grinding.
- Emergency Calls 24/7.
- Commercial and Domestic Work.

All our work is professionally undertaken at competitive rates.
Fully insured and nptc qualified with over 15 years' experience.
Free quotes & advice given.

www.sevenoakstreecare.com



A PALMER COMPLETE ELECTRICAL SERVICES

01732 886 939 07774 201 154

ALL ELECTRICAL WORK
LARGE OR SMALL



FULL REWIRES, PARTIAL
REWIRES, FUSEBOARDS,
TEST CERTIFICATES,
SOCKETS, LIGHTING.
DOMESTIC COMMERCIAL
LOCAL AUTHORITY
RELIABLE FRIENDLY SERVICE.

PORTLAND BENTLEY

*Painting & Decorating
Contact Paul*

email: portlandbentley1989@gmail.com

07939 401467

01732 886801

- **TMBC Parking** - there has been much misinformation about the new rules. Western Rd will remain "residents only permit parking" but with short stay shoppers allowed. Western Rd car park will have an ANPR camera installed, so do not forget to pay. The ANPR camera CAN RECOGNISE BLUE BADGES who park free.
- **The next Parish Council meeting** will be held at **7.30pm on Monday 7th October 2024, at the Bowls Club**. The agenda will include a period for public contributions and questions.

Council Contacts

Chairman mike.taylor@boroughgreen.gov.uk **01732 882880**

Clerk clerk@boroughgreen.gov.uk **07568 536405**

Full minutes are posted at [MINUTES](#) | [mysite \(boroughgreen.gov.uk\)](#)

Advertising

Any commercial bodies or people offering services who wish to advertise should contact **Chris Atkins** email chris.atkins1952@gmail.com or phone **01732 366615** about rates and availability of spaces.

If you have something you want to sell, a caravan or cottage you want to let for holidays etc then contact Margaret Jeffery. The cost of such personal notices are just £2 per issue.

The views expressed in articles are not necessarily those of the Editorial Team. The Editorial Team cannot accept responsibility for wrong information received, or mistakes that occur in publication. The Editorial Team cannot accept responsibility for any delay in distribution. Publication of advertisements does not imply any form of recommendation. All articles in this magazine are covered by copyright and permission must be obtained before reproducing them in any format.

The total print run of the magazine is 2000 copies and it is also available to read on the COGS, BG Community and Parish Council websites.

Thanks

Thank you to the Borough Green Parish Council for their generous grant and to all our advertisers for their financial support which makes the production of this magazine possible. Also thank you to all our distributors who get the Voice to every house in the village.

Articles for the next magazine

The Voice is your community magazine and it relies on the people of Borough Green to make it as interesting as possible. Organisations, clubs and individuals are welcome to submit articles on their activities and subjects likely to be of interest to the village.

The deadline for articles for the next magazine will be **Tuesday 15 October** and these should be sent to the address below. The next magazine will cover November so if you have any events planned for that month and you would like them to appear in the diary section please send to :-

m-jeffery@talktalk.net

01732 883978

Margaret Jeffery
7 Lendon Road
Borough Green
TN15 8SE



Professional Domestic Cleaning Services

Are you a busy mum?
Working long hours?
Just need extra help?

Give us a call for reliable DBS
checked staff and fully insured
service!

07545 455742
sophie@capablecleaners.co.uk
www.capablecleaners.co.uk

J. Lawrenson

Tree and Fencing Specialist

- Hedge cutting, reduction and removal
 - Tree pruning, felling and surgery
 - Stump and garden clearance
- All types of fencing supplied and erected,
including panel and close boarded

Fully Insured
All waste and cuttings recycled

Please call James on
07759 137817
01732 849295

Or email
j.lawrenson@hotmail.com



COTOR FLOORING



DOMESTIC & COMMERCIAL FLOORING



TEL : 01732 885 849



www.cotorflooringltd.co.uk



07853 093 540



sales@cotorflooringltd.co.uk

CARPET

LAMINATE

VINYL

BRING SAMPLES TO YOU



- Carpet, Vinyl, Laminate
- Supply, Fitting, Removal
- Flooring Accessories

- Samples to your door
- FREE Quotation
- Over 20 years experience

70 Western Road, Borough Green, Sevenoaks, Kent, TN15 8AH



What's New @ 1st Borough Green Scout Group

Hello from 1st Borough Green Scout Group! As we reflect on what is always a hectic and exciting summer period for us, we wanted to give you a taster of what we have been up to.

It is no secret that we have now left our former Headquarters next to the doctors' surgery. Thanks to everyone who helped us move out so smoothly which allowed us to continue with our regular programme of activities - we really appreciate the support.

1st Borough Green Scout Group had very many happy years on the site with thousands of young people making lifelong memories and creating life-changing experiences there. We'd like to place on record our thanks to all of our landlords who have made that possible, from Amey Roadstone, to Hansons Aggregates (who provided us with the building and land free of charge many years ago and without whom we would never have enjoyed such a brilliant location), to Russet Homes and Reynolds; all have played a crucial part in enabling us to become what we are today.

Whilst it was a wrench to leave our home of more than three decades, our group is so much more than just its building and we remain in a really strong position. We are looking to the future with real optimism now that we have settled into our current meeting place at Potters Mede. Whilst this might not be our permanent home, it is a fabulous facility which offers us the chance to continue to provide weekly activities and opportunities for well over 100 young people from right across Borough Green and beyond. We are very grateful to Borough Green Parish Council for their support in enabling us to move quickly into the new site and ensure impressive continuity in the programme of activities we provide to young people every week.

And those activities are as varied and exciting as ever. Just in the few weeks before the summer holidays, for example, our Beaver Colony helped out at the Borough Green Foodbank, our Cub Pack took part in a brilliant joint camp with a group from Sidcup and our Scout Troop made a splash at a water sports weekend. These activities are the essence of scouting in Borough Green - fun, challenging and at the centre of our community.

And, of course, the fun did not stop there because over the summer, some of our Scouts and Explorers joined others from the Malling area to head to Switzerland for a week full of adventure and exploration; ranging from white water rafting, to exploring the mountains, cheese tasting to climbing and more. Whilst some others had great fun completing their Duke of Edinburgh's Award expeditions. We'll perhaps get them to tell you more about those adventures in a future edition.

In the meantime, we are always on the look out for helpers with tasks big or small. Our group only thrives because of the volunteers who make it tick. Volunteering with our group is rewarding, challenging, but most of all it is great fun! If you are interested in getting involved in any capacity then please contact: boroughgreenscouts@gmail.com.

With best wishes

Matt Paramor
Acting Group Lead Volunteer





Creative
Minds

Arts and Minds

Connect with others, develop your creative skills and improve your wellbeing

A free-of-charge friendly, relaxed and inclusive three month programme. Explore working with a wide range of materials and techniques including drawing, watercolours, paper crafting and glass painting.

New Group starting 1 October

Tuesdays 1.30 - 3pm

Borough Green Village Hall

Register for this group via Live Well Kent

Visit the West Kent Mind website
for more details

westkentmind.org.uk/creative-minds



Live well

Kent and Medway

Friends of the Surgery

The Friends recently donated a wheelchair to the Surgery. The Friends rely on donations, which are gratefully received, to enable them to fund items for the benefit of the Surgery's patients. To donate please contact Jane Ardley, Hon. Treasurer, either by phone 01732 885933 or by email jjbtrainer@outlook.com.

BOROUGH GREEN PARISH COUNCIL



ESTABLISHED
APRIL 1934



Be extraordinary

become a parish councillor

Would you like to:

- Make a difference to local people?
- Give something back to your community?
- Help shape change for the benefit of your local area?

*Ordinary
people doing
an amazing
job!!*



Do you want to help shape the local community? We have 2 vacancies on the Parish Council. For more details contact

clerk@boroughgreen.gov.uk

Borough Green Medical Practice

www.boroughgreenmedicalpractice.co.uk



Flu/Covid clinics – 5 and 12 October

The surgery will be holding two Flu and Covid clinics on a Saturday this year on 5 and 12 October from 8.15am – 1pm. These clinics are open to all our eligible patients (see list below for eligibility) and patients will be given a timed appointment. Our booking system is open now and you can book your slot by calling our reception team on 01732 883161. We know that the phone lines can be busy and there is now an option to request a callback. We have had great feedback on our callback service and it saves you having to hang on the telephone.

Please arrive at your allotted time and be aware that the car park is likely to be very busy so please do walk to the surgery if you are able to. As always, it is advisable to bring an umbrella/sunscreen/winter coat in anticipation of the unpredictable October weather. We look forward to seeing you then.

<u>Flu eligibility</u>	<u>Covid eligibility</u>
Those aged 65 years and over	Adults aged 65 years and over
Those in long-stay residential care homes	Residents in a care home for older adults
Carers in receipt of carer's allowance, or those who are the main carer of an elderly or disabled person	Frontline NHS and social care workers including those working in care homes for older people
Close contacts of immunocompromised individuals	Organ, bone marrow or stem cell transplant patients
Frontline workers in a social care setting without an employer led occupational health scheme including those working for a registered residential care or nursing home, registered domiciliary care providers, voluntary managed hospice providers and those that are employed by those who receive direct payments (personal budgets) or Personal Health budgets, such as Personal Assistants	Those being treated with systemic steroids for more than a month
	Those who require long-term treatment for immunosuppression or those receiving immunosuppressive or immuno-modulating biological therapy
	Those with a history of haematological malignancy including chronic leukaemia, lymphomas, and leukaemia
	Those with genetic disorders affecting the immune system
Chronic respiratory disease, Chronic Heart/Vascular disease, Chronic Kidney/Liver disease, chronic neurological disease, Diabetes and adrenal insufficiency, immunosuppressed patients, patients with Asplenia or dysfunction of the spleen, morbid obesity	Those undergoing chemotherapy or radiotherapy
	Those living with HIV
Pregnant women	



Wednesday 4th December 24

Christmas at Waddesdon Manor

Are you ready to get festive?
Join us for a glorious day out!

£70.00

Magical displays in the
Manor house
Captivating illuminations in
The grounds
A Christmas Fair on the
Manor Drive
Delicious hot food at the
Food Village



Contact us to reserve your place

L J Travel 34 High Street, BG
01732 886968
lisa@ljtravel.co.uk

National Trust members
£53.00



"THE AERIAL MAN"
TV AERIAL AND SATELLITE ENGINEER

NO CALL OUT CHARGE
FREE ESTIMATES
LOCAL FRIENDLY FAMILY FIRM,
EST 40 YEARS
FREE VIEW - FREESAT - BT VISION
TALKTALK - SKY- FREE CHANNELS
FULLY INSURED
DISCOUNTED RATES FOR
SENIOR CITIZENS



Borough Green freesat

07436 564 897



BESPOKE WINDOW RENOVATIONS



Installation of windows and doors
Repairs to windows, doors and
conservatories

07809 725 984

Contact@BespokeWindowRenovations.co.uk

www.bespokewindowrenovations.co.uk



Saturday 26 October
10am - 1pm
Rochester Cathedral



Do You Enjoy Knitting or Crocheting?

Why Not Come Along To Our Annual Big Knit at Rochester Cathedral?

Everyone is Welcome So Bring a Friend or Two

You can help us by creating:

Squares: Plain coloured squares to be knitted in either white, pink, blue or grey.
Please bring them together in batches of 36 or 49 or even sewn up completely already as blankets

Square Size: 6 inch x 6 inch, size 8 needles, (cast on approx 30 stitches and knit 56 rows)

Popular Items: Baby Cardigans (0-5years), loopie cardigans and blankets (all sizes)

Popular Colours: Pink, Blue, White, Cream and Grey

Thank you!

All items made or donated will be sold in our beautiful shop 'Handmade with Love' which is located in The Mall, Maidstone.

Please RSVP to jodie@makingmiracles.org.uk

BOROUGH GREEN LIBRARY

The library is open – with a wide range of services, from free access to books, computers, WiFi and information on the hire of music, audio books and films.

Opening hours are

10 - 1 and 2 - 5 on Monday, Tuesday, Thursday and Friday
and 9 - 1 on Saturday.

Events for which no booking is required see diary section

Ancestry - Monday 10.15 - 12.15 need to book an appointment

For more advice please call the library on 03000 413 131 or email boroughgreenlibrary@kent.gov.uk where staff will be able to help.

We look forward to seeing you.



is working to improve digital inclusion and capabilities. The next events are on Fridays 4 October and 1 November to be at 11.00 - 1.00. To book a session and find out more please visit www.digitalkent.uk or call 0300 0410950.

The next clinic for sound support for deaf and hard of hearing people is on Friday 25 October 2.00 - 3.30.



Events in the Village for the month of October

- 1 BG Library - Scrabble Club - 2.15 to 4.15
- 3 SJCC - Mass - 10.00
BG Lunch Club - BGVH - 10.00 to 1.00
BG Library - Coffee & Chat - 10.15 to 12.15
- 4 Potters Tots Playgroup - Potters Mede - 9.30 to 11.00
BG Lunch Club - BGVH - 10.00 to 1.00
BG Library - Baby Bounce and Rhyme Time - 10.15 to 10.45
- 5 BG Medical Practice - Flu and Covid Jab Clinic
Saturday Open House - COGS - 10.00 to 12.00
COGS - Harvest Bring 'n' Share Supper - 6.00
- 6 **COGS - Holy Communion said - 8.30**
SJCC - Mass - 9.30
COGS - Harvest Festival All-Age Communion - 10.00
BGBC - Service - 10.30
Bash the Trash - BGVH - 11.30 to 12.30
- 7 **Toddler Time - COGS Annexe - 10.00 to 12.00**
BG Parish Council - Bowls Club - 7.30
- 8 BG Library - Scrabble Club - 2.15 to 4.15
- 9 Sticky Fingers - BGBC - 10.00 to 11.15
BGBC - Women's Fellowship - 2.00 - Search word Faith
- 10 SJCC - Mass - 10.00
BG Lunch Club - BGVH - 10.00 to 1.00
BG Library - Coffee & Chat - 10.15 to 12.15
- 11 Potters Tots Playgroup - Potters Mede - 9.30 to 11.00
BG Lunch Club - BGVH - 10.00 to 1.00
BG Library - Baby Bounce and Rhyme Time - 10.15 to 10.45
Friday 2 Book Club - BG Library - 2.00
- 12 BG Medical Practice - Flu and Covid Jab Clinic
Saturday Open House - COGS - 10.00 to 12.00
- 13 SJCC - Mass - 9.30
COGS - Holy Communion and Children's Church - 10.00
BGBC - Service - 10.30
- 14 **Games, Tea and Chat - COGS Annexe - 2.00 to 4.00**
BGVH - u3a meeting - 2.00
- 15 BG Library - Scrabble Club - 2.15 to 4.15
- 16 **COGS - Film Afternoon - 2.00**
- 17 SJCC - Mass - 10.00
BG Lunch Club - BGVH - 10.00 to 1.00
BG Library - Coffee & Chat - 10.15 to 12.15
- 18 Potters Tots Playgroup - Potters Mede - 9.30 to 11.00
BG Lunch Club - BGVH - 10.00 to 1.00
BG Library - Baby Bounce and Rhyme Time - 10.15 to 10.45



19 Saturday Open House - COGS - 10.00 to 12.00

COGS Craft Fair - 11.00 to 2.00



20 COGS - Breakfast Church - 9.00

SJCC - Mass - 9.30

COGS - Holy Communion - 10.30

BGBC - Service - 10.30

21 Toddler Time - COGS Annexe - 10.00 to 12.00

22 BG Library - Scrabble Club - 2.15 to 4.15



23 Sticky Fingers - BGBC - 10.00 to 11.15

24 SJCC - Mass - 10.00

BG Lunch Club - BGVH - 10.00 to 1.00

BG Library - Coffee & Chat - 10.15 to 12.15

25 BG Lunch Club - BGVH - 10.00 to 1.00

BG Library - Baby Bounce and Rhyme Time - 10.15 to 10.45

26 Saturday Open House - COGS - 10.00 to 12.00

Wrotham Fireworks - (See page 23)

27 SJCC - Mass - 9.30

COGS - Holy Communion and Children's Church - 10.00

BGBC - Service - 10.30



COGS - Tea-Time Church - 4.30

28 Games, Tea and Chat - COGS Annexe - 2.00 to 4.00

29 BG Library - Scrabble Club - 2.15 to 4.15

30 BGBC - Women's Fellowship - 2.00 - Carys' choice of favourite hymn

31 SJCC - Mass - 10.00

BG Lunch Club - BGVH - 10.00 to 1.00

BG Library - Coffee & Chat - 10.15 to 12.15

Abbreviations

COGS Church of the Good Shepherd

BGBC Borough Green Baptist Church

SJCC St Joseph's Catholic Church

BGVH Borough Green Village Hall

November

Some dates in November

10

Remembrance Sunday

23

Borough Green and Platt Players Show

30

COGS Christmas Fayre

30

BG Christmas Lights Switch on



RESULTS: HAVE YOUR SAY – VILLAGE HALL PARKING

As far as are we aware this was the first time the Village Hall Committee has attempted to consult with its users and general public over car parking. We are overwhelmed with the support and contribution from respondents whether face to face, online or by email/post.



The committee greatly appreciates all those that participated over the consultation process which ran for over 4 weeks. The wide-ranging views and opinions given by the respondents, over what is a potentially contentious and emotive issue, have generally demonstrated reassurance on our consultative approach and has greatly assisted the committee in reaching potential solutions. It is obviously recognised by the committee that any decision will not please all people and therefore the focus has to be on the car park and hall users as the priority, especially in an arena of ever spiralling costs of maintenance and growth in the hall usage.

To be clear, because there appears to still be misconceptions, the hall car park (though central to the high street!) is a **private car park for hall users** and is **not a public car park**. The public car park for the village is located on Western Road. Revenue raised from parking goes back into enhancing and maintaining the hall and car park for the benefit of the community. There were some comments received regarding the 'old days' and the legacy of the hall; the committee (all who are local residents!) are strongly committed to not only maintaining the legacy but promoting and building on it for the good of the local community and the surrounding villages. The consultation has demonstrated how important public use of the car park is to locals in order to allow the 'short stay' footfall required to maintain the village high street. The committee fully respects and are committed to that feedback provided by respondents – but are realistic that the hall and its car park needs to be maintained to avoid the loss of the local amenities and business.

Summary of the Consultation

Consultation included posts on social media. Individual correspondence was carried out with hall hirers, an article in Church magazine, posters published locally with QR Codes, and face to face discussions. Hard copy and pdf versions of the questionnaire were available and could be requested. There was a total of 384 respondents. There were a number of additional email comments received on the consultation, all of which were responded to personally and individually.

The summary details of the consultation are as follows:

- A large number of respondents (53%) do **not** attend the hall for activities therefore being neither a hirer or user of the hall.
- Of all respondents a surprisingly large number (66%) also stated that they do not regularly park in the village hall car park.
- Regarding whether the car park should be kept just for hall users, an overwhelming 97% believe it should be kept available for non-hall users to park. This was supported further by the respondents stating that 60% Very Often or Regularly use the car park when **not** attending any hall activities.
- Regarding charging, a majority of respondents (60%) believe it should be free for up to the first hour.

Parking Duration

When asked, of those that park in the car park, what the duration of their parking was the largest majority of 47% stated their stay was under 30 minutes with a further 24% of respondents stating it was less than an hour. This bears out the committee's own 'on site' analysis which showed that over 80% of visitors during the day are categorised as 'short term' parking, often to pop to bakery or shops, and were often less than 30 minutes.

As the Library is accessed through the car park the committee also attempted to identify Library usage of the car park and found a majority of 45% of respondents Rarely or Never visit the Library and 24% visited Regularly or Very Often. The Library was invited as a car park user to participate in the consultation both face to face and by correspondence.

Maximum Stay and Minimum Return

On the questions of what the maximum stay in the car park and the minimum return period should be, 54% of respondents believe the **maximum stay** should be capped at 2 hours and 58% believe the **minimum period** before a car can return should also be capped at 2 hours.

Charging Options

When considering potential charging options, the majority of respondents at 39% believe that free parking should be set for 1 hour with 21% believing it should be for 30 minutes. This supports analysis which indicates that, other than hall use, most users are 'pop in and out'. Most respondents also remarked that 1 hour was sufficient parking to do most things in the high street without charging.

Effect on Footfall

Respondents were also asked if charging to use the car park would affect footfall on local business and 96% responded stating that it would, however additional comments were generally supportive of including a 'free' period to allow the respondent short visits to local amenities.

Additional Comments

Of additional comments made there were some genuine and positive questions and comments that were useful to the consultation as well as the individual communications regarding the legacy and history of the hall. Additional comments, and in some case responses where relevant, are contained in Part 2 of this report.

Conclusions

Although 71% of respondents believe there should be no charge for parking at the village hall this is unfortunately deemed not a viable option by the committee at current time due to:

- Ongoing and increasing costs of maintenance
- Additional costs imposed on hirers (who can't then park for their activities)
- No public body offer to contribute to parking
- Potential increase on local rates for householders (many who are non-hall users) to cover costs
- Loss of footfall to the high street by free commuter or block parking

The committee is looking into the use of future grants and if successful it may help with any future costs.

In the interests of the local community and following some of the comments from consultation the trustees are investigating and considering with the assistance of the Charity Commission implementation of a potential 'self-imposed cap' on any revenue raised from parking to cover maintenance costs. This, if ratified, will require any funds over the cap to be put back to the community under the hall's new Community Social Responsibility activity - therefore minimising any potential 'profiteering' issues or concerns.

Charging Outcomes

Following the consultation and having reviewed the results the following are the committee's initial proposals for parking at the village hall car park:

Charge Periods

The following are the proposed charge periods being considered by the committee because of the consultation:

Charging period	Mon-Sat 0830 - 1700	To allow school drop off/pick up but hopefully encourage short stay at busy hall times.
Maximum Stay	2 Hours	As the consultation result shows this is the preferred option to allow movement and minimise block parking. Most respondents want 'short stay'. Hall users are exempt for events.

WESTBANK Join Our Team

by Aurem Care

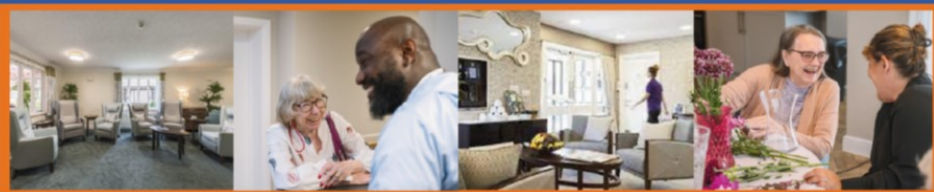


Nurse & Care Positions Available



Call us and apply today on **01732 780066**

Discover how you can make a meaningful difference in the lives of our residents.



Email: manager.westbank@aurem-care.com
64 Sevenoaks Road, Borough Green, TN15 8AP

www.aurem-care.com



Shires Heating Services



07921 197780



ben@shiresheatingservices.com

- Boiler servicing
- Boiler breakdowns and repairs
- New boiler installations and system upgrades
- Power flushing / system cleaning
- Aga and Rayburn servicing and repairs
- Unvented cylinder service and repairs
- LPG, oil and leisure park homes / caravans
- Landlords gas safety records
- Cooker and gas fire servicing
- Radiator repairs and replacements



www.shiresheatingservices.com



Minimum Return	2 Hours	As consultation result shows this is deemed sufficient to 'short stay' and return to collect children or prescriptions after first stop.
Overnight Parking	Free after 1800	To allow free car park use by local food outlets and amenities etc after 1800.
Weekend Parking	Sunday - Free	To accommodate church goers or remedial activity such as walkers.
Hall Users	Free	As recognised stakeholders hall users park free for activities.

Charging Cost

Actual cost for charge periods per hour is yet to be determined as TMBC recently increased charging and any potential charge should, to avoid block parking, be considered to prevent an exodus from public car park to the village hall parking. The proposal structure following the consultation currently being considered by the committee is outlined below:

1 hour	Proposal is 'Free' first hour	To allow 'pop in' activity and increase footfall while minimising block parking
1-2 Hours	Proposal is a charge that is likely to be higher per hour than Western Rd	Small fee to encourage movement but deter parking preference over Western Rd
Over 2 hours	Uplift charge or fine	Over 2 hours should be using public parking

Once again, many thanks for all the participants for their contributions. The full report is available on our Facebook page as a pdf file for download at

<https://www.facebook.com/share>

Borough Green Village Hall Management Committee

Free Short Mat Bowls Equipment and Venue!

Are you interested in starting a new community group? Do you enjoy bringing people together for fun and friendly competition? We have an exciting opportunity for you! We're offering the free use of short mat bowls equipment to anyone willing to set up and run a local group at Borough Green Village Hall.

Short mat bowls is a fun, social game that can be enjoyed by people of all ages and abilities. It's an excellent way to:

- ◆ Promote physical activity
- ◆ Encourage social interaction
- ◆ Develop new skills
- ◆ Create a sense of community



Free Venue for 8 Weeks

To sweeten the deal, the Village Hall Committee is offering 8 weeks of free hire to help get your group started. And then a 10% discount thereafter. We will also support you in the promotion of your group with marketing.

What We're Looking For

We're seeking an enthusiastic individual or team who can:

1. Organise and manage the group
2. Schedule regular sessions
3. Promote the activity within the community
4. Ensure the equipment is used responsibly

How to Get Involved

If you're interested in this opportunity or would like more information, please contact David Peirce 01732 646040 or email boroughgreenvillagehall@gmail.com.

The Village Hall Committee are excited to support new initiatives that bring our community together!



Painter and Decorator

33 years experience

Interior & Exterior

Free Estimates

Friendly and reliable

Call Steve 07811 360269
www.jarvisdecorating.co.uk



Extensions - Loft conversions
 Internal & External Alterations
 Full Planning &
 Structural Engineers Service
 References Always Available

www.honeycombconstruction.co.uk
(01732) 883443
07989 509 630

Jason Langstaff Electrician

- Design and Installation
- Fuse Board Upgrades
- Security Lighting
- Full or Part Rewires
- New Builds and Extensions
- Additional Sockets & Lighting Points
- Garden Power & Lighting
- System Upgrades
- Fault Finding
- CCTV
- PAT Testing



Professional - Reliable - Courteous - Insured
All Work Completed to BS7671

Sevenoaks
based

T: 01959 525 136

M: 07817 733 257

E: jmllimited@aol.com



“Help at an emotional time”

Borough Green,
 Wrotham, St Mary's Platt, Ightham
 & surrounding villages
01732 780600

43 Western Road, TN15 8AL
boroughgreen@welhamjones.co.uk

- ◆ Traditional & Contemporary funerals
- ◆ Eco-friendly funerals & woodland burials
- ◆ Private chapel of rest ◆ Home arrangements
- ◆ Memorials & keepsakes



www.welhamjones.co.uk



Borough Green & Wrotham u3a

Meetings are normally held every second Monday of the month at 2pm in Borough Green village hall with tea, coffee and biscuits. Parking is available as is disabled access.



Date for diary

Monday 14 October: Hops and fruit growing in England

This talk will be given by Chris Levett who has spent over 60 years working with hops and fruit farms over a lifetime in the UK. He will talk about his experiences, how the countryside has changed over the years in Kent and what he feels the future holds.

Please contact Irene at membershipsec.bgwu3a@gmail.com for more information. Annual fee is only £20. Non-member guest fee is £3.

Phil Williams, Communications Secretary



BOROUGH GREEN
Primary School

Are your children due to start school in September 2025?

Please join us at Borough Green Primary School for one of our new parent school tours. We welcome visits to our warm and friendly community school and look forward to sharing our learning with you. Tours with our headteacher, Mrs Jackson, are taking place **Tuesday 8 October, Wednesday 6 November and Friday 22 November** all at 9.30am and 1.30pm. We are also holding an open morning on **Saturday 12 October** at 10am. To book tickets go to

www.eventbrite.co.uk/o/borough-green-primary-school-92250866193



Wrotham Cricket Ground
Saturday 26 October 5.30 to 9pm
Bonfire: 6.30pm
Fireworks: 7.15pm

This is a charity event with all proceeds donated to local causes.

Information on tickets (in advance and at the gate) at www.wrothamfireworks.com

All tickets purchased will be entered into our amazing raffle.

Borough Green & Wrotham Railway Station Car Park

southeastern

After last month's Voice went to print Southeastern announced that they had been reviewing customer feedback on their proposed changes to the methods of paying for car parking at a number of stations including Borough Green. They have taken the decision to pause the changes in car parking payments for a few months while they increase the options to help everyone continue to pay for their parking. In the meantime all existing methods of payment will continue.

Aaron Penna Victoria Penna
Chartered Physiotherapists

Highly Experienced and Skilled Therapists

All Musculoskeletal, Rehabilitation and
Respiratory problems catered for

Clinic appointments available

Home Physiotherapy Service

Check out our 5* rating on google

Call today for an appointment or email
for further information

01732 823189

admin@pwphysio.co.uk

www.pwphysio.co.uk



DB Home & Garden Maintenance

Carpentry † Painting † Decorating
Wooden Conservatory & Window Refurbs
Flooring † General Repairs

Hedge & Grass Cutting
Sheds † Summer Houses † Fencing
Decking † Patios

No job too small! Fully Insured!

Tel: 01622 202475 - Mob: 07545 086827

Email: dbhomeandgarden@gmail.com

H Holiday Inn

AN IHG HOTEL

MAIDSTONE - SEVENOAKS

*Celebrate
in Style*



FESTIVE PARTY NIGHTS | FESTIVE LUNCHES | CHRISTMAS DAY LUNCH

Book now on **01732 781 500** or email **events@himaidstone.com**

f @holidayinnmaidstonesevenoaks

@hi_maidstonehotel

Tom Tugendhat MP's Column

At the very end of July, the new Government announced plans which would significantly change planning rules and how the locations for new homes are decided. Sadly, the approach of the Government to rip up planning laws in rural areas such as ours means the greenbelt will be torn up in many places. I am committed to increasing the supply of housing, but we can do this in a different way. Our green spaces are an invaluable part of the national inheritance for our children and our children's children - when it's gone, it's gone.

Building the right homes in the right places means that where there is higher demand in cities logically the concentration of new homes should be built there. The new Government's plan sees the housing target for Tonbridge and Malling Borough Council increase by 29%. Representing parts of Tonbridge and Malling Borough Council and Sevenoaks District Council, I have calculated that the new Government are asking our area to deliver nearly 1,000 more new homes each year on top of the existing targets. Yet while this is requested in our area London is seeing its housing target reduce and neighbouring Councils such as Medway also see a reduction.

That's why I support our Council in leading the opposition to these proposed changes. We need new housing in towns and cities, while ensuring rural areas can preserve their character, and ensure development only takes place where there is appropriate infrastructure and community consent is upheld.

tom.tugendhat.mp@parliament.uk

TMBC updates

Community Grants have now been delivered by Tonbridge and Malling Borough Council to organisations that were successful in their bids to this year's scheme. In round two of the council's community development grant scheme, financed by the UK Shared Prosperity fund, just over £131,000 has been allocated to 45 groups in Tonbridge and Malling. Grants of up to £5,000 were available to organisations that provide a service to residents or help to improve the economic, social or environmental wellbeing of the borough. The grants include £3,750 to Borough Green Parish Council for shoppers buses and £500 for Ightham and District Gardeners Club to support the club with speakers and venue costs. A third round of community development grants will take place in March 2025.



Job Fair If you are looking for a job or perhaps a change of direction with your career, don't miss our jobs fair at the Capel Morris Centre in Aylesford on **Wednesday 23 October**. Meet employers from a range of sectors, including logistics, retail, construction and care. There'll also be tips and advice on CV preparation and how to shine in an interview. The event runs from 10-1pm. There's no need to book, just come along and take the first step towards securing your dream job!

Scam Alert A text message appearing to be from a 'GOV' website is circulating. The message quotes your vehicle registration and a link to pay a fine. This is a scam! We don't issue parking fines by text. Any doubts email parking.office@tmbc.gov.uk or visit www.actionfraud.police.uk.

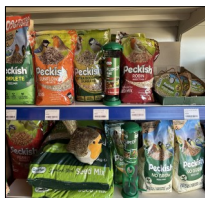


Greenacres

Borough Green Road, Ightham, TN15 9JA

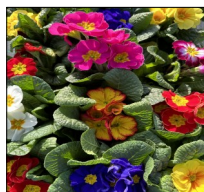
01732 884726

PLANT NOW FOR AUTUMN!



- Visit us for shrubs, trees, heathers, seeds and bulbs

- Compost, pots, logs, lawn feed and bird feed



- Gardening tools, planting accessories, fertilisers and plant feed

- Plaxtol apples, pears and raspberries

- Local cheeses, cakes and Simply Ice Cream



- Treat yourself to a **Rombouts** coffee now available in farm shop

Open every day:

9am - 5pm

sales@greenacresgardencentre.co.uk



Borough Green Ladies Football Club

Borough Green Ladies are underway with the new season in the Kent Division 2 Mid West of the South East Counties Womens Football League. In the first league game they had a resounding 9-2 win against Barming and followed up in a cup competition with a 4-0 win against Mersham.

Scheduled home games at Wrotham School are on 29 September and 13 October.



BG&W JUNIOR NETBALL CLUB

New training times 2024/25

Wrotham School Sports Hall

TUESDAY	Years 9 & 10	5.30 - 6.30
	Years 10 & 11	6.30 - 7.30
WEDNESDAY	Years 3.4 & 5	4.45 - 5.30
	Year 6	5.30 - 6.30
	Years 7 & 8	6.30 - 7.30

Contact SarahBGWNC@gmail.com



Wrotham (St George's) Cricket Club

Continuing to enjoy the tropical weather next stop for Wrotham on 11 August was Hildenborough where the home side batted first and notched up 153 off their 35 overs. Wrotham's bowling was generally good and tight and kept the score within bounds despite some mixed fielding. Of note were Antony Malyan's 1 for 10 off 6 overs and skipper James Ives' 2 for 27 off 7. In reply Neil Pickford continued his excellent season with 46 to give us a good base then was followed up by David Jones who, with Antony Malyan, pushed the total along and was left with 49 not out as Wrotham reached their target with 4 overs to spare.

August continued with an away fixture at Ash on the 18th, where for once Wrotham were able to bat first. Opener Neil Pickford gave Wrotham a good start although his 31 was probably viewed as a failure given his excellent form this season! Newcomers Antony Wolfe with 32 and Albert Jose on 20 not out took us to 187 for 8 off the 40 over allocation. Ash fell well short making 112 all out off 26 overs. Star of the show was Will Booth, having a brilliant season as an all rounder, whose 9 overs gave him 5 wickets for only 31 runs conceded.

John Humphreys

SMALL NOTICES



Slimming World
Group on
Wednesdays
8.00am, 9.30am, 5.30pm and 7pm
at Borough Green Village Hall.

Phone Anita on **07725 484 361**



Clock Kent



Clock & Watch repairs,
restoration & servicing
Collection & delivery available.

Call Paul on 01732 884363 / 07831 884789

Or email: paul@clockkent.com

www.clockkent.com



BROCK COTTAGE
HOME

Hand selecting vintage homewares &
furniture for home makers.

www.brockcottagehome.com

Follow us: @brockcottagehome

Phone Sockets/Broadband

25 YRS BT ENGINEER - FULLY INSURED

- New Phone & Broadband sockets / extensions
- Fault finding repairs / Improve broadband speeds
- Cat 5 wiring
- Internal/external re-routing and tidying of cables prior to double glazing

Tel: G. NUGENT **07845 705900**

www.fixyourline.co.uk



Kent EquestriPaw



Dog walking &
Equestrian Services

kentequestripaw@gmail.com

07359 328 163



Hall bookings

Parish Hall - Quarry Hill

Alan Williams 01732 886557

Village Hall

www.boroughgreenvillagehall.co.uk

01732 646040

Potters Mede

Bernard Galopin 07568 536 405

Defibrillator Locations

a) **24 hours a day**

The Village Hall

Potters Mede

The Recreation Ground

The Fire Station

b) **When premises are open**

The Medical Centre

BG Primary School

Fourways Dentists



Borough Green and Platt Players

(Formerly known as Borograds)

Presents...

'ONE NIGHT ONLY' LET US ENTERTAIN YOU'

23.11.24

A variety show with songs, sketches, dancing, poetry and musicians

CURTAIN UP 19:30PM

PLATT CHURCH TM15 8NE

TICKETS:

ADULTS: £12

CHILDREN AGED 16 OR UNDER: £8

For further information contact:

Lucilla...07887 518855

or email lucilla@themount65.co.uk

**TICKETS ON
SALE AT
SHAKTI
NEWSAGENTS
AND TICKET
SOURCE**



PLD GENERAL BUILDER

PETER 07769 736646

Borough Green 01732 382530 (answer machine)

Extensions
Refurbishments
Brickwork
Driveways
Fascia & Soffits
GRP Flat Roofing

Conversions
Plastering
Patos
Kitchens / Bathrooms
Fencing
Painting & Decorating

AND ALL GENERAL BUILDING



Borough Green Baptist Church

For ages 5 and under

10am - 11.15am

Alternative Wednesdays see diary section

**£2 per child to include play, refreshments
and take home craft**

Regular updates on [Facebook.com/StickyFingersCrafts](https://www.facebook.com/StickyFingersCrafts)

Tonbridge and Malling Ramblers

You don't have to be a Ramblers member to try up to three 'taster' walks with us. If you're new to our walks, please contact the walk leader to check that their walk will suit you. For details of these and other upcoming walks and walk leaders, see our Facebook page at www.facebook.com/groups/tonbridgeandmallingeramblers or visit www.tonbridgeandmallingeramblers.org.uk.



October	Route	Distance in miles
Thursday 3rd	Leisurely walk along the Greensand Way from Linton church taking in the deer park, goat sanctuary, orchards and some lovely views of the Kent countryside. A few stiles and a little quiet lane walking, but most of the walk is on easy tracks. There is a gentle climb with a short steep stretch towards the end.	6.6
Sunday 6th	A mainly flat circular walk to celebrate the 40th anniversary of Kent Ramblers. Walk from East Malling through Oaken Wood towards Teston, returning via East Malling Heath. Mix of footpaths and some lane walking. Moderate difficulty.	9
Wednesday 9th	Rural walk from Upper Halling through meadows, quiet woodland paths and some rough tracks. Steep ascent to the North Downs Way; long flat section along the North Downs Way; drop down to the Lost Village of Dode. Brief stop at Dode Church before a gradual ascent to Holly Hill with views of the Medway Valley, Medway Bridge, Rochester Castle and cathedral spire. Seven stiles, three steep climbs and descents. Moderate difficulty.	5
Saturday 12th	Borough Green circular all-day walk via the Bourne Valley, Basted Mill, Old Soars Manor and Dunks Green. Picnic lunch at Shipbourne Common. Return through the Fairlawne Estate and orchards. Footpaths and some quiet lane walking. Good views. Moderate pace.	12
Thursday 17th	Westerham to Limsfield Chart via Crockham Hill. Steady climb for a view of the North Downs; then into the woods towards Limsfield Chart; return via Squerryes Court. Moderate difficulty.	6
Sunday 20th	Ryarsh Rumble: fairly flat walk from Ryarsh to West Malling accompanied briefly by the rumble of the M20! Don't let this put you off this walk through the countryside. Moderate difficulty.	5
Sunday 27th	Get your eyes fixed when we pass Cataract Cottage on this gentle flat walk around the fields and lanes to the north of Tonbridge. ©James Pavlou / Walk Tonbridge 2020	5
Walks usually start mid-morning. There's a short half-way break (bring refreshments) and we usually finish near a pub. Most walks are dog-friendly (see website).		

WROTHAM COMPUTER CARE

Computer help
at your Home or Office

PCs and Apple Macs

We are a local company providing
an affordable service to local families,
professionals, businesses and schools.

For more details please contact us:

01732 780176 or 07795 552440

mwhite@wrothamcomputercare.com

www.wrothamcomputercare.com

LOCAL LOCKSMITH

NO CALL-OUT FEE! 24HR SERVICES

- ✓ uPVC / DOUBLE GLAZING / PATIO DOORS
& WINDOW LOCK REPAIRS.
- ✓ JUST MOVED IN ? WHO HAS A KEY ?
COMPLETE LOCK CHANGE SERVICE.
- ✓ LOCK-OUTS / LOST KEYS / BROKEN
LOCKS.
- ✓ EMERGENCY LOCK & DOOR OPENING.
- ✓ DOMESTIC & COMMERCIAL WORK.
- ✓ ALL TYPES OF LOCKS / HARDWARE
SUPPLIED & FITTED.

Call Paul on:

07506 451405

graves972@btinternet.com

PaulGraves
Locksmith

Checkatrade
Ave Score 9.95 | Over 1200 Reviews
Checkatrade ID 311650

FOURWAYS
ENGINEERING



EST. 1973

**Specialists in all Classic and Sports Car Restoration
and all Vehicles General Servicing**

Unit 12 Platt Industrial Estate, Maidstone Road,

St Marys Platt, Sevenoaks, Kent, TN15 8JL

Telephone: 01732 884 288

Email: info@fourwaysgroup.co.uk

Do you struggle out of bed?
Is walking difficult or painful?
Have you an injury that just
isn't getting better?

Contact Carole Simpson
Experienced and specialist
physiotherapist

01732 780909

**Stay active and start
enjoying Life**

Carole@boroughgreenphysio.co.uk
www.boroughgreenphysio.co.uk



The Studio at Windy Nob, Staleys
Road, Borough Green TN15 8RL



Residential Sales, Lettings & Valuations

**Independent Village
Estate Agent
Dedicated to helping you**

Our fee is only 1% + VAT

Call now for a free valuation

01732 884422

enquiries@hillier-reynolds.co.uk

3 Sevenoaks Road, Borough Green,
Kent, TN15 8AX



01732 885585
kings-estate-agents.co.uk



Sevenoaks Road, Ightham,
TN15 9AD

For All Auto Queries

01732 780591 07747535657

All makes and models
MoTs

Free courtesy car
Free local collection and delivery

Brakes Servicing
Repairs No. Plates

All mechanical and diagnostic
work carried out by
qualified automobile engineers